

The diversification of termites: Inferences from a complete species-level phylogeny

Marcio R. Pie¹  | Tiago F. Carrijo²  | Fernanda S. Caron¹ 

¹Departamento de Zoologia, Universidade Federal do Paraná, Curitiba, Brazil

²Centro de Ciências Naturais e Humanas, Universidade Federal do ABC, São Bernardo do Campo, Brazil

Correspondence

Marcio R. Pie, Departamento de Zoologia, Universidade Federal do Paraná, C.P. 19020. 81531-990 Curitiba, PR, Brazil. Email: marcio.pie@gmail.com

Funding information

Fundação de Amparo à Pesquisa do Estado de São Paulo, Grant/Award Number: #2020/06041-4; Conselho Nacional de Desenvolvimento Científico e Tecnológico, Grant/Award Number: #302904/2020-4

Abstract

Termites play a major role in a variety of ecological processes in tropical and subtropical biomes worldwide, such as decomposition, soil formation and aeration, and nutrient cycling. These important ecosystem services were achieved through their highly complex societies and remarkable adaptations, including the evolution of reproductive division of labour, the acquisition of endosymbionts and the capacity for extensive environmental engineering, yet the causes and consequences of their ecological success are still poorly understood. The goals of our study were (a) to provide the first complete, species-level phylogeny of all currently recognized termite species by integrating the available genetic and taxonomic data, as well as methods of phylogenetic imputation and divergence time estimation; and (b) to explore variation in speciation rates among termite lineages. We provide the inferred relationships as a set of 1,000 pseudo-posterior trees, which can be used in future comparative analyses. We demonstrate that speciation rates have been relatively constant throughout the history of termites, with two positive shifts in speciation rates: one at their origin of Euisoptera and the other concordant with evolution of Termitidae. On the other hand, there was no obvious trend towards deceleration in speciation rates for termites as a whole, nor within the most species-rich families. The provided trees might represent a valuable resource for termite comparative studies by summarizing the available phylogenetic information, while accounting for uncertainty in the inferred topologies.

KEYWORDS

diversification, Isoptera, phylogenetic imputation, speciation, TACT, Termitidae

1 | INTRODUCTION

Termites are the quintessential environmental engineers in the tropics, performing many important ecosystem services such as decomposition, soil formation and aeration, and nutrient cycling (Ashton et al., 2019; Evans et al., 2011; Jouquet et al., 2006, 2011). They are dominant animals in the soil, comprising up to 40%–65% of the total soil macrofaunal biomass (Eggleton et al., 1996; Tuma et al., 2020) and can be responsible for 54%–68% of total decomposition in some biotopes

(Ashton et al., 2019; Jouquet et al., 2011). Despite the important ecological role of termites on a variety of terrestrial ecosystems, our understanding of the adaptations that led to such high prevalence is still limited (Davis et al., 2009; Legendre & Condamine, 2018). Investigating the causes and consequences of the remarkable ecological success of termites will require not only extensive ecological and life-history data, but also a broad understanding of their phylogenetic relationships.

The evolutionary route leading to eusociality in termites was different from that of other eusocial insects, with ancestral

termites probably evolving from subsocial organisms similar to present-day *Cryptocercus* cockroaches (Cleveland et al., 1934; Legendre & Grandcolas, 2018). Relatively little is known about termite diversification other than inferences on the timing of the most basal splits (e.g. Bourguignon et al., 2015, 2017; Evangelista et al., 2019; Legendre et al., 2015; Ware et al., 2010). To the best of our knowledge, only three studies to date used analytical methods to quantify patterns of termite diversification. Davis et al. (2009) tested the conjecture postulated by Wilson (1992) that the evolution of social behaviour would be associated with a decrease in diversification rates. No evidence for such a decrease was found by Davis et al. (2009), and a heterogeneity in diversification rates among termite lineages was revealed, yet the low power provided by the use of sister-clade comparisons necessarily limits the scope of their analyses. More recently, Legendre and Condamine (2018) used parametric methods to explore large-scale diversification patterns in Dictyoptera and found evidence for two main rate shifts: one at the origin of termites (with eusociality) and another at the origin of Termitidae (with the loss of cellulolytic parabasalids symbionts). They also found that lineages with true workers diversified faster than those with pseudergates (“false” workers). True workers are individuals that diverge early in the developmental pathway from the imaginal line, while pseudergates have high developmental plasticity, being able to undergo progressive, stationary and regressive moults, eventually becoming alates (Korb & Hartfelder, 2008). This trait is often related to the degree of eusociality in termites, and species with true workers are considered more highly eusocial (Shellman-Reeve, 1997). Finally, Condamine et al. (2020) used an extensive analysis of fossil and phylogenetic data to explore temporal patterns of diversification in Dictyoptera, particularly with respect to the potential impacts of mass extinctions. Although their results are comprehensive and robust, they tended to focus at the level of Dictyoptera and, given that it includes groups that are vastly different in their biology, it is not clear to what extent they would reflect specifically the trends within Isoptera. Nevertheless, despite these important contributions, more fine-scale variation in diversification among termite lineages is still poorly understood.

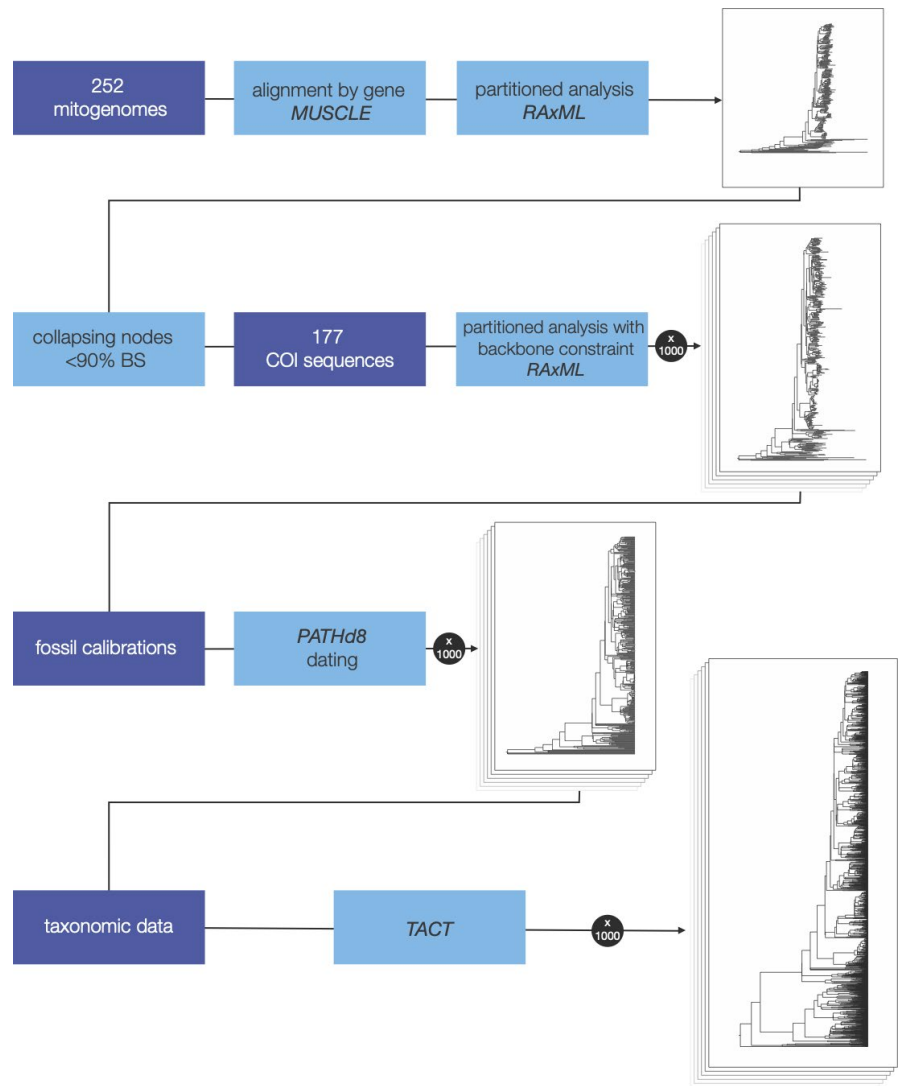
Important advances have been obtained for termite systematics in recent years using morphological and mitogenomic data (Inward et al., 2007; Ware et al., 2010; Cameron et al., 2012; Bourguignon et al., 2015, 2017; see also Legendre et al., 2015). More recently, Bucek et al. (2019) inferred the main relationships among 66 termite lineages using transcriptome data, and the results were largely congruent with previous hypotheses. However, the availability of phylogenetic information in termites (as in most taxa) is highly uneven, such that relatively few lineages account for most of the sequences available in public repositories, whereas little or no information is available for many

species. Given that many types of inference require the use of large-scale phylogenies (such as diversification studies, see Chang et al., 2020; Pie & Tschá, 2009), one important alternative is the integration of phylogenetic and taxonomic data with simple models of lineage diversification to provide pseudo-posterior trees that can be used in downstream analyses. In particular, analyses can be repeated with many alternative topologies, thus accounting for phylogenetic uncertainty and therefore allowing for inferences that would not be feasible based on taxonomically limited trees (e.g. Arnan et al., 2018). In this study, we integrate phylogenetic and taxonomic data to provide the first species-level phylogeny of all currently recognized termite species. In addition, we use the inferred relationships to explore variation in speciation rates among termite lineages.

2 | METHODS

The main steps used in our analyses are shown in Figure 1. We began by obtaining 252 termite mitogenomes from GenBank, which included all available mitogenomes to date for which the taxon was identified to the species level, as well as nine mitogenomes that were only identified to the genus level (Table S1). The latter were used to improve the accuracy of phylogenetic inference, but were pruned from the final trees. We chose not to include the transcriptome data from Bucek et al. (2019) in our analyses given that their phylogeny is largely congruent with previous mitogenomic studies. The only exception is the placement of Sphaerotermitinae as sister clade to Macrotermitinae, which was not uncovered with confidence in previous studies. We therefore used this relationship as a topological constraint in our phylogenetic analyses (see below). Each mitochondrial gene was aligned separately using MUSCLE (Edgar, 2004), and all genes were concatenated in a single alignment. The best model of evolution for the data set was estimated using PartitionFinder 2 (Lanfear et al., 2016). We ran a partitioned analysis on RAXML and retained the resulting topology while keeping only the nodes with over 90% bootstrap support (Figure S1). This analysis provided a highly robust tree overall, such that this cut-off only collapsed a small number of nodes. We then added to the alignment 177 COI sequences available on GenBank and BOL (Table S1). Although other loci are available for a reduced number of termite species, we chose to focus only on COI and complete mitogenomes to avoid the computational challenges involved in sparse matrices for this level of taxon sampling. We used the resulting mitogenomic +COI data set in another RAXML analysis, but using the original tree with well-supported nodes as a topological constraint, as well as the monophyly of the genera and the position of Sphaerotermitinae indicated above. The rationale for the use of topological constraints is the common observation

FIGURE 1 Diagram indicating the main steps in our analyses. Dark blue boxes indicate sources of data, whereas light blue boxes correspond to analyses. TACT: Taxonomic Addition for Complete Trees



that, in largely unbalanced data sets, such as when including complete mtDNA genomes along with single mtDNA genes, one commonly finds aberrant clustering patterns due to the increased frequency of paraphyly and/or rogue taxa. In our case, given that the vast majority of the mitogenomic tree were used as a topological constraint, the addition of COI data could not result in the disruption of the main termite relationships during heuristic searches, thus ensuring that the analyses remained in a favourable region of tree space. After phylogenetic analyses (Figure S2), we retained 1,000 bootstrap replicates (henceforth backbone trees) for downstream analyses.

We used the obtained backbone trees and fossil calibrations indicated in Tables S2–S5 to obtain calibrated trees using PATHd8 v. 1.0 (Britton et al., 2007). Minimum and maximum age constraints were specified for all calibrations, except for one where the midpoint between the minimum and maximum age constraints was used, as PATHd8 requires a fixed age. PATHd8 is a rate-smoothing method similar to non-parametric rate smoothing (Sanderson, 1997) that allows

for the efficient estimation of divergence times for large trees. We decided to use this combination of RAXML and PATHd8 because preliminary analyses using BEAST 2.6.1 (Bouckaert et al., 2019) showed considerable difficulties to obtain convergence on this data set. The divergences in the resulting trees were summarized using TreeAnnotator v.2.6.3 (Rambaut & Drummond, 2020) using the settings to generate a maximum clade credibility tree with median node heights. There were a few isolated cases of negative branch lengths, possibly due to high variance in estimates of divergence times in particular nodes (see Heled & Bouckaert, 2013). Instead of enforcing all branch lengths to be positive, we left those branches in the summary tree to allow for the reader to identify their location and interpret them with the corresponding caution. However, it is important to note that this phenomenon is only present in the summary tree and not in the individual trees used as input.

Finally, we obtained complete, species-level trees for all currently valid termite species using a two-stage approach that takes as inputs backbone topologies based on molecular

data and sets of taxonomic constraints (e.g. placing species within their corresponding genera, subfamilies or families) using Taxonomic Addition for Complete Trees: TACT (Chang et al., 2020). TACT is similar to another two-stage approach known as PASTIS (Thomas et al., 2013), which was used in previous studies to provide large-scale trees of several taxa, including birds (Jetz et al., 2012), squamates (Tonini et al., 2016) and sigmodontine rodents (Maestri et al., 2017). The main advantage of TACT in relation to PASTIS is that it provides branch lengths based on local diversification rates, as opposed to global rates; thus being more suitable for large phylogenies with heterogeneous rate regimes (Chang et al., 2020; Rabosky et al., 2018; Siqueira et al., 2020). Thomas et al. (2013) categorized species into three types: type 1 species have genetic information; type 2 species have no genetic information but are congeners of a species with genetic information; and type 3 species have no genetic data and are members of a genus that does not have genetic data. In our data set, we have 402, 2017 and 550 species from each type, respectively. Taxonomic data for all currently recognized termite species were obtained using the Termite Database (Constantino, 2016; last accessed on 10 June 2020). We included as taxonomic levels their corresponding genera, families and (in the case of Termitidae and some Rhinotermitidae), subfamilies. To some well-established non-monophyletic taxa, such as Rhinotermitidae, Termitinae and *Nasutitermes*, no constraint was set. Species were added to each of the 1,000 backbone trees indicated above to generate the final 1,000 pseudo-posterior trees.

We explored variation in speciation rates among termite lineages using the DR statistic (Jetz et al., 2012; hereafter, λ DR), as implemented in *ES-sim* (available at <https://github.com/mgharvey/ES-sim>). λ DR is a non-model-based estimator of speciation rate that is calculated as a weighted average of the inverse branch lengths between a given species to the root of the phylogeny (i.e. the root-to-tip set of branches). It is therefore similar to the node-density estimator (Freckleton et al., 2008), except that it places more emphasis on recent branch lengths (Jetz et al., 2012). As a consequence, λ DR tends to reflect speciation rates rather than net diversification rates (Belmaker & Jetz, 2015; Jetz et al., 2012). We calculated λ DR for each of 500 pseudo-posterior trees and visualized variation in λ DR among lineages using the *contMap* function in *phytools* 0.7–47 (Revell, 2012) in R 4.0.1 (R Core Team, 2020). We also explored diversification patterns in deeper nodes of the tree using lineages-through-time (LTT) plots of all termites, as well as specific clades (Termitidae, Kalotermitidae, Apicotermitinae, Macrotermitinae, Nasutitermitinae, and Cubitermitinae). We carried out LTTs with three different trees: (a) trees including only species with genetic data; (b) trees augmented using TACT but that were all based on the same MCC guide tree, and (c) the trees in the first group that were augmented using TACT. These

three LTTs therefore allow for assessing uncertainty due to phylogenetic inference, taxonomic augmentation and both factors, respectively.

3 | RESULTS

A summary tree of the inferred relationships and divergence times for species with genetic data, after calibration using PATHd8, is shown in Figure 2. According to these estimates, the most common recent ancestor of all termites evolved during the early Jurassic Period, whereas Neoisoptera arose between the early and late Cretaceous (Figure 2). Sensitivity analyses using four alternative calibration schemes (Tables S2–S5) provided very similar results (Figure 2a).

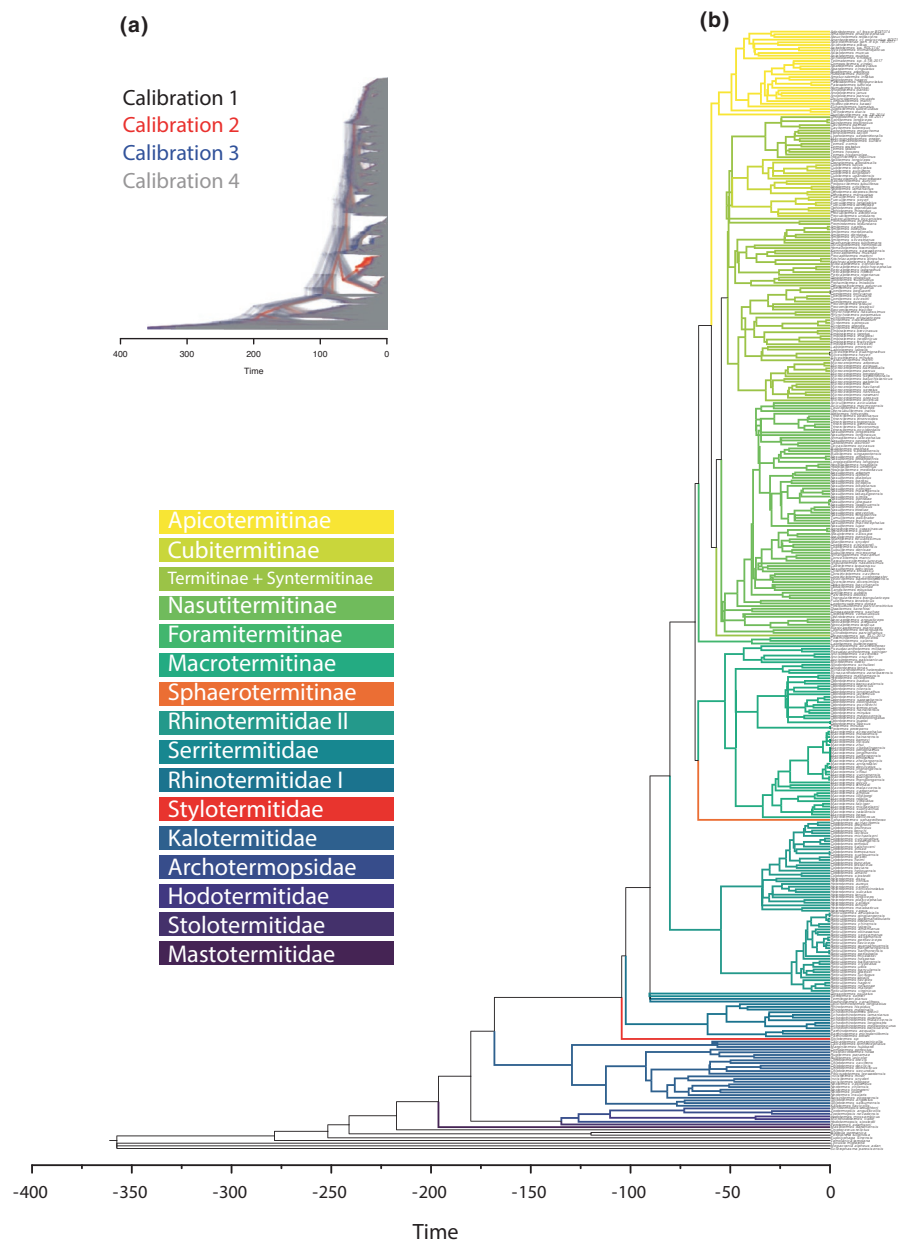
The mapping of speciation rates (as measured by the λ DR statistic) onto the termite tree was able to reveal the main speciation regimes during the history of termites (Figure 3). The families Mastotermitidae, Archotermopsidae, Hodotermitidae, Stolotermitidae and Kalotermitidae, in general, were characterized by low speciation rates. A few lineages showed an increased speciation rate within these clades, and these patterns are related to the origin of some genera, such as *Anacanthotermes* (Hodotermitidae) and *Bifiditermes* (Kalotermitidae). Within the non-Termitidae Neoisoptera, the groups Serritermitidae, Rhinotermitinae, *Termitogeton* and some clades of *Heterotermes* also showed lower speciation rates. Specially Serritermitidae, which the evolutionary regime is comparable only with that of Mastotermitidae and Archotermopsidae. Stylotermitidae and *Coptotermes* had similar regimes, and *Reticulitermes* had a fast radiation in the last 23 Mya.

As expected, most Termitidae clades showed relatively high speciation rates, but a few different evolutionary regimes can be observed among lineages. The fungus-growing termites (Macrotermitinae) had the fastest radiation considering all termites. This subfamily originated ca 70 Mya, but the evolutionary regime speeded up in the last 10–20 Mya, especially within the genus *Macrotermes* (Figures 3 and 4). Nasutitermitinae also showed an increase in speciation rate in the last 10 Mya that can be observed through the LTTs plots (Figure 4). Apicotermitinae and Cubitermitinae, on the contrary, had relatively constant rates since their origin, and the Foraminitermitinae clade showed the lowest speciation rate within Termitidae.

4 | DISCUSSION

In general, our results with respect to the main relationships are particularly congruent with those obtained by Bourguignon et al. (2015, 2017), but there was broad agreement between our results and those of several published

FIGURE 2 Divergence time estimates of termite lineages with available genetic data. (a) Densitree of four different sets of trees indicating how the resulting estimates were largely congruent between calibration schemes (Tables S2–S5); (b) Summary tree of 1,000 constrained bootstrap trees after being ultrametricized using PATHd8 using calibration 3 (Table S4). See text for details



studies: (a) *Mastotermes* as sister to all other termites (Bourguignon et al., 2015; Bucek et al., 2019; Cameron et al., 2012; Inward et al., 2007; Legendre et al., 2015; Ware et al., 2010); (b) Archotermopsidae as paraphyletic with respect to Hodotermitidae (Legendre et al., 2015); (c) Kalotermitidae as sister to Neoisoptera (Bucek et al., 2019; Legendre et al., 2015; Ware et al., 2010); (d) Rhinotermitidae as paraphyletic, with respect to Serritermitidae and Termitidae (Bourguignon et al., 2015; Inward et al., 2007; Legendre et al., 2015); (e) Heterotermitinae (including Coptotermitinae) as sister group to Termitidae (Bourguignon et al., 2015; Bucek et al., 2019); (f) Macrotermitinae and Apicotermitinae monophyletic (Bourguignon et al., 2017; Inward et al., 2007; Legendre et al., 2015); (g) Termitinae paraphyletic with respect to Syntermitinae, Nasutitermitinae and Cubitermitinae (Bourguignon et al., 2017; Bucek

et al., 2019; Legendre et al., 2015). In addition, despite some variation among lineages in their speciation rates, our results indicate that the accumulation of lineages in termites, in general, was fairly constant, with relatively little differences among clades. Moreover, the extensive exploration of alternative topologies and divergence time estimates suggests that, despite the current level of phylogenetic uncertainty, this scenario is unlikely to change as new phylogenetic data become available.

Our time-calibrated tree estimated termites to have originated between 176 and 232 Mya and Termitidae between 60 and 80 Mya. While these dates are congruent with Ware et al. (2010), most recent works have estimated more recent origins to these clades, roughly 50 Mya more recent to Isoptera and 20 Mya to Termitidae (Bourguignon et al., 2015, 2017; Bucek et al., 2019; Engel et al., 2009; Legendre et al., 2015).

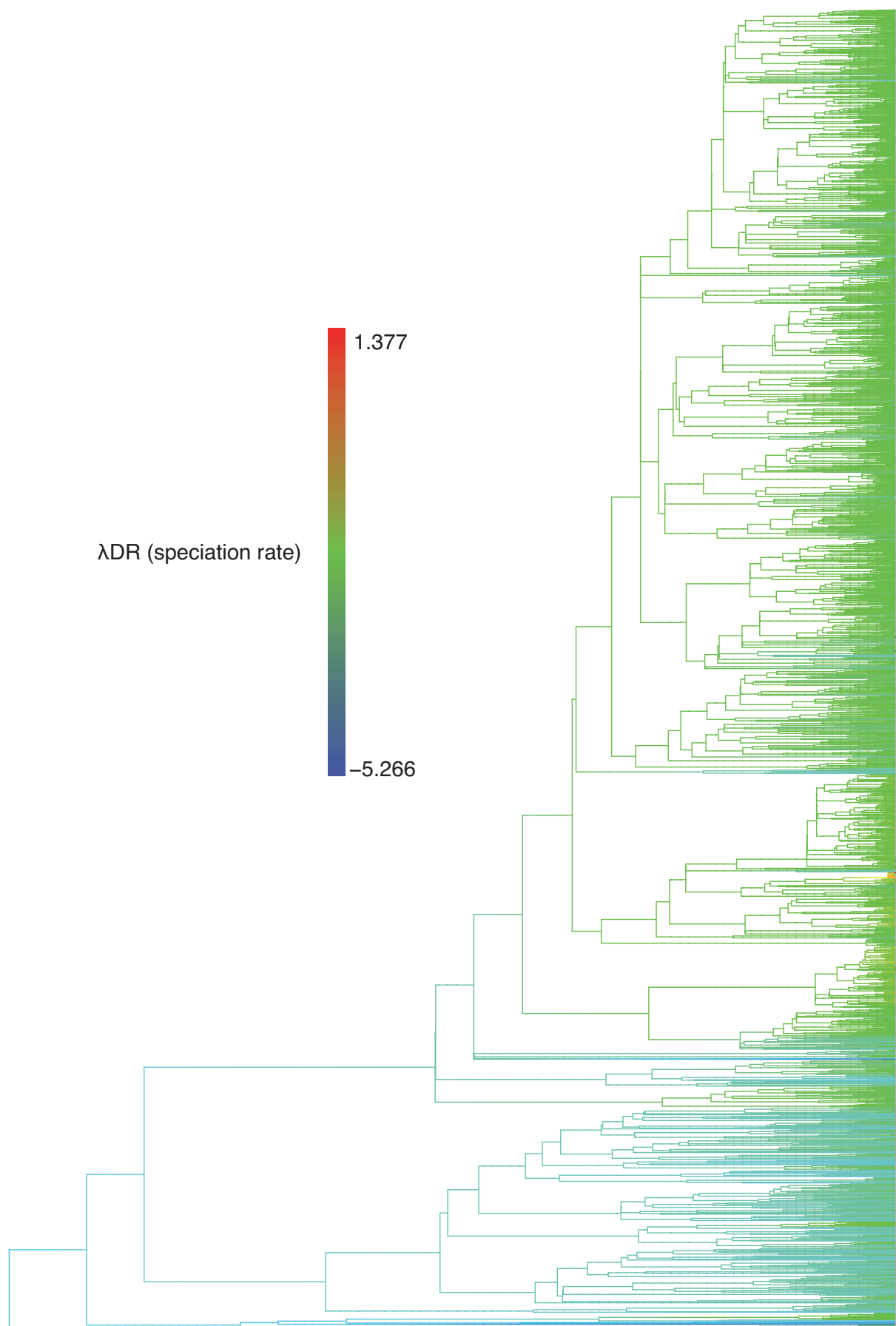
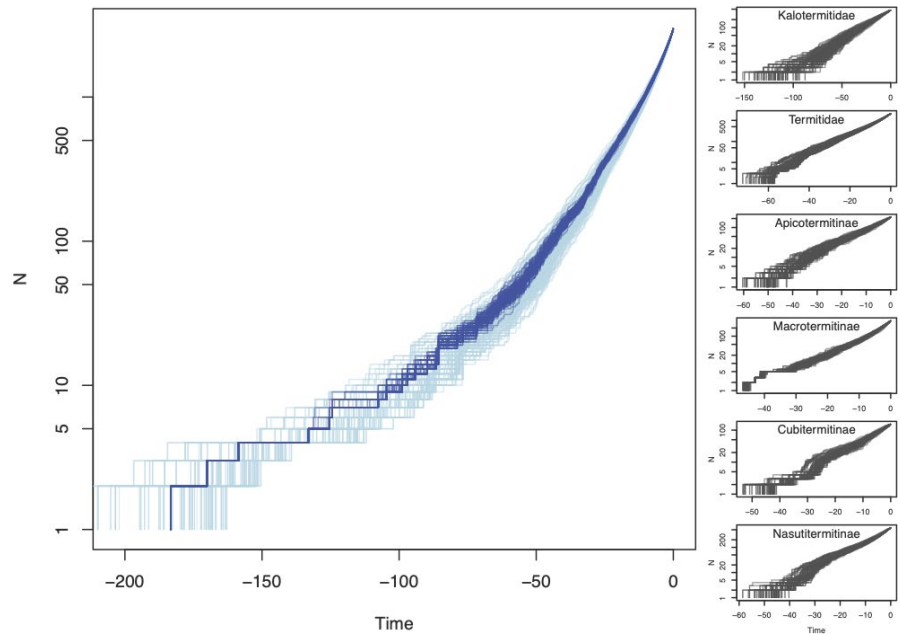


FIGURE 3 Phylogenetic relationships among all currently recognized termite species. Branches were coloured based on their corresponding speciation rates

FIGURE 4 Lineages-through-time (LTTs) plots of 100 pseudo-posterior topologies of all termites (light blue), as well as 100 pseudo-posterior topologies based on TACT imputation on the same backbone topology (dark blue). Figures on the right correspond to LTTs of specific clades, namely Kalotermitidae, Termitidae, Apicotermitinae, Macrotermitinae, Cubitermitinae and Nasutitermitinae



The causes of such discrepancy are still unclear. Further exploration of divergence time estimates, particularly using more powerful methods such as the fossilized birth-death approach (Heath et al., 2014) and that include more unlinked nuclear loci might be particularly revealing.

Mastotermes darwiniensis, the sole living species of Mastotermitidae and an ancient lineage with a single living species from Australia, showed a very low diversification rate. This agrees with the diversification shift found by Davis et al. (2009) between Mastotermitidae and the other termite families. However, the fossil record of Mastotermitidae is rich and distributed all over the world (Bezerra et al., 2020; Zhao et al., 2019), and this pattern may be for a high extinction rate that followed a Cretaceous radiation of the group (Engel et al., 2009). Within the clade composed of Hodotermitidae, Stolotermitidae and Archotermopsidae, the genus *Anacanthotermes* shows a singular evolutionary regime, with a high speciation rate in the last 25 Mya. Along with the other two living genera of Hodotermitidae, these are harvest termites, and our results are in agreement with the fossil record of the family, suggesting that this clade originated and expanded with the grasslands during the Oligocene and Miocene (Krishna et al., 2013).

Both *Mastotermes* and Hodotermitidae are considered to have a true worker caste (Korb & Hartfelder, 2008), and Legendre and Condamine (2018) found that societies with this innovation showed a high overall diversification rate. As discussed above, however, these two groups showed different evolutionary regimes in our analysis, and the true worker alone is probably not a sufficient explanation for the diversification patterns. In fact, the definition of true workers is often associated with two independent traits: (a) sterility, and (b)

developmental constraint to the imaginal line. In *Mastotermes*, workers have a developmental constraint, but are not sterile (Bourguignon et al., 2016), whereas in Hodotermitidae, as well as in most of the termites that showed a high speciation rate (see below), a (true) sterile worker caste is present. Thus, worker sterility alone may be a better explanation for termite evolutionary patterns, once a highly altruistic worker caste is a good indicator of the spectrum of eusociality in these insects (Shellman-Reeve, 1997).

The family Kalotermitidae is the second largest among termites in terms of number of species, and such richness alone probably led Davis et al. (2009) to recover in their analysis a diversification shift in the origin of the clade Kalotermitidae + Neoisoptera. Our results, however, showed a low overall speciation rate for this family (Figure 2). In comparison with other groups with similar numbers of living species, such as Nasutitermitinae or Macrotermitinae, this is an old clade with a constant speciation rate over time (Figure 3), and the currently high diversity may represent low extinction rates instead of a high speciation rate. Also, colonization by rafting is favoured by the wood nest habits of Kalotermitidae, and many species of this group are important components of oceanic island faunas. These dispersion/colonization events were probably important drivers of diversification for the group (Krishna et al., 2013).

The genera *Reticulitermes* and *Stylotermes* showed evolutionary regimes with high speciation rates, but both may have been overestimated by a taxonomic bias. *Stylotermes* and *Reticulitermes* comprise 45 and 142 described species, respectively, but the validity of many of these names are questionable, and many synonyms may occur after taxonomic revisions (Takematsu & Vongkaluang, 2012; Wu et al., 2018). Taking into consideration this bias, the main

speciation shift within termite evolution was the origin of Termitidae (Figures 2 and 3; see also Davis et al., 2009; Engel et al., 2009; Legendre & Condamine, 2018). The radiation of this clade is related to the loss of the symbiotic relationship with the cellulolytic parabasalids, those same that were one of the main factors driving the origin and radiation of earlier termites (Higashi & Abe, 1997; Nalepa, 2015). Bucek et al. (2019) proposed that feeding on this organic-rich substrate starved the cellulolytic parabasalids symbionts to extinction. This ended up allowing them to have a diverse diet, including the entire decomposition gradient of plant material, from sound wood to grass, epiphytes, to soil and cultivation of fungi symbionts (see also Engel, 2019). This diversification made the Termitidae family to account for the impressive biomass of termites in the tropics and subtropics, comprising almost 80% of all described termite species (Engel et al., 2009; Tuma et al., 2020). Also, nearly half of the termite species are soil feeders, and this habit was crucial to the radiation of the family (Bucek et al., 2019; Engel, 2019; Higashi & Abe, 1997; Krishna et al., 2013).

Macrotermitinae was the clade with the highest speciation rate in our results, and the external rumen with cultivation of *Termitomyces* fungi (basidiomycetes) was probably the driving force to the ecological success of this subfamily in the Old World. Within this clade, yet two patterns could be observed (Figures 2 and 3): a first one at the origin of the clade, and the second in the last 10 Mya, probably related to the savannas and C4 grasses expansions in Africa (Charles-Dominique et al., 2016; Edwards et al., 2010; Nobre & Aanen, 2012).

The Nasutitermitinae subfamily originated 57 Mya and showed a high speciation rate throughout the time (Figures 2 and 3). Specialization of a strict chemical defence in this clade is often regarded to evolve driven by an arms race against termite's major predators, the ants (Engel et al., 2009; Higashi & Abe, 1997). The increase in the fossil record of ants in the last 50–60 Mya and our results for the origin of this group is consistent with this hypothesis (Ward, 2014).

It is important to emphasize that the stochastic polytomy resolution approach used in this study has limitations. First, the level of phylogenetic information necessarily varies across the tree, with some clades having more or less underlying data. This effect is nearly unavoidable, given that the choice of taxa for phylogenetic studies is never random—researchers tend to include phylogenetically distant species and/or species that are available for sequencing. However, the pattern of accumulation of lineages (Figure 3) seems fairly robust despite the uncertainty involved in phylogenetic imputation. Nevertheless, we expect that this limitation might become increasingly less severe as additional species are sequenced and included in future studies. Another important limitation is that the analysis is necessarily constrained to include species that have been described. The extent to which different termite clades are

more or less susceptible to this bias is currently unknown and possibly unknowable. Finally, it is important to note that the approach used here is qualitatively different from traditional phylogenetic studies. In general, such studies historically tend to use a 'bottom-up' approach, starting with a relatively small subsample of representative species/loci and working increasingly towards complete phylogenies. This approach can be important for a variety of areas in comparative biology, from systematics to biogeography. However, it necessarily involves a curve of diminishing returns, with genus-level phylogenies often involving the collection and analysis of one or more orders of magnitude more species and loci than a family-level phylogeny (and again for species-level phylogenies in relation to genus-level ones). However, many areas actually do not require precise point estimates of phylogenetic relationships. For these areas, the 'top-down' approach provided here and in similar studies in other taxa (Jetz et al., 2012; Maestri et al., 2017; Tonini et al., 2016) provides an important tool to allow for useful inference while accounting for phylogenetic uncertainty. For instance, in a study that obtained phylogenies in a similar approach to ours, Arnan et al. (2018) showed how ant phylogenetic diversity changed across a gradient of anthropogenic disturbance despite topological uncertainty in the phylogeny of the studied species. Likewise, although the trees obtained in the present study can be improved as future phylogenetic/taxonomic data become available, it is unlikely that the general patterns of relatively constant speciation rates will change. Therefore, despite these inherent limitations, we envision the use of large-scale phylogenetic information provided in our study might serve as an important tool to uncover a variety of phenomena relevant to termite ecology and evolution.

ACKNOWLEDGEMENTS

This study was partially funded through a grant from CNPq (#302904/2020-4) to MRP and through a grant from São Paulo Research Foundation (FAPESP, #2020/06041-4) to TFC. We thank the Editor and three anonymous reviewers for valuable comments on the manuscript.

ORCID

Marcio R. Pie  <https://orcid.org/0000-0002-2949-4871>

Tiago F. Carrijo  <https://orcid.org/0000-0001-6308-7252>

Fernanda S. Caron  <https://orcid.org/0000-0002-1884-6157>

REFERENCES

- Arnan, X., Burle, G., Pie, M. R., Ribeiro-Neto, J. D., & Leal, I. R. (2018). Increased anthropogenic disturbance and aridity reduce phylogenetic and functional diversity of ant communities in Caatinga dry forest. *Science of the Total Environment*, 631–632, 429–438. <https://doi.org/10.1016/j.scitotenv.2018.03.037>

- Ashton, L. A., Griffiths, H. M., Parr, C. L., Evans, T. A., Didham, R. K., Hasan, F., Teh, Y. A., Tin, H. S., Vairappan, C. S., & Eggleton, P. (2019). Termites mitigate the effects of drought in tropical rainforest. *Science*, 363, 174–177. <https://doi.org/10.1126/science.aau9565>
- Belmaker, J., & Jetz, W. (2015). Relative roles of ecological and energetic constraints, diversification rates, and region history on global species richness gradients. *Ecology Letters*, 18, 563–571. <https://doi.org/10.1111/ele.12438>
- Bezerra, F. I., Mendes, M., & De Souza, O. (2020). New record of Mastotermitidae from Fonseca Basin, Eocene-Oligocene boundary of southeastern Brazil. *Biologia*, 75, 1881–1890. <https://doi.org/10.2478/s11756-020-00441-x>
- Bouckaert, R., Vaughan, T. G., Barido-Sottani, J., Duchêne, S., Fourment, M., Gavryushkina, A., Heled, J., Jones, G., Kühnert, D., De Maio, N., Matschiner, M., Mendes, F. K., Müller, N. F., Ogilvie, H. A., du Plessis, L., Popinga, A., Rambaut, A., Rasmussen, D., Siveroni, I., ... Drummond, A. J. (2019). BEAST 2.5: An advanced software platform for Bayesian evolutionary analysis. *PLOS Computational Biology*, 15, e1006650. <https://doi.org/10.1371/journal.pcbi.1006650>
- Bourguignon, T., Chisholm, R. A., & Evans, T. A. (2016). The termite worker phenotype evolved as a dispersal strategy for fertile wingless individuals before eusociality. *The American Naturalist*, 187, 372–387. <https://doi.org/10.1086/684838>
- Bourguignon, T., Lo, N., Cameron, S. L., Šobotník, J., Hayashi, Y., Shigenobu, S., Watanabe, D., Roisin, Y., Miura, T., & Evans, T. A. (2015). The evolutionary history of termites as inferred from 66 mitochondrial genomes. *Molecular Biology and Evolution*, 32, 406–421. <https://doi.org/10.1093/molbev/msu308>
- Bourguignon, T., Lo, N., Šobotník, J., Ho, S. Y. W., Iqbal, N., Coissac, E., Lee, M., Jendryka, M. M., Sillam-Dussès, D., Křížková, B., Roisin, Y., & Evans, T. A. (2017). Mitochondrial phylogenomics resolves the global spread of higher termites, ecosystem engineers of the tropics. *Molecular Biology and Evolution*, 34, 589–597. <https://doi.org/10.1093/molbev/msw253>
- Britton, T., Anderson, C. L., Jacquet, D., Lundqvist, S., & Bremer, K. (2007). Estimating divergence times in large phylogenetic trees. *Systematic Biology*, 56, 741–752. <https://doi.org/10.1080/10635150701613783>
- Bucek, A., Šobotník, J., He, S., Shi, M., McMahon, D. P., Holmes, E. C., Roisin, Y., Lo, N., & Bourguignon, T. (2019). Evolution of termite symbiosis informed by transcriptome-based phylogenies. *Current Biology*, 29, 3728–3734.e4. <https://doi.org/10.1016/j.cub.2019.08.076>
- Cameron, S. L., Lo, N., Bourguignon, T., Svenson, G. J., & Evans, T. A. (2012). A mitochondrial genome phylogeny of termites (Blattodea: Termitoidae): Robust support for interfamilial relationships and molecular synapomorphies define major clades. *Molecular Phylogenetics and Evolution*, 65, 163–173. <https://doi.org/10.1016/j.ympev.2012.05.034>
- Chang, J., Rabosky, D. L., & Alfaro, M. E. (2020). Estimating diversification rates on incompletely sampled phylogenies: Theoretical concerns and practical solutions. *Systematic Biology*, 69, 602–611. <https://doi.org/10.1093/sysbio/syz081>
- Charles-Dominique, T., Davies, T. J., Hempson, G. P., Bezeng, B. S., Daru, B. H., Kabongo, R. M., Maurin, O., Muasya, A. M., van der Bank, M., & Bond, W. J. (2016). Spiny plants, mammal browsers, and the origin of African savannas. *Proceedings of the National Academy of Sciences*, 113, E5572–E5579. <https://doi.org/10.1073/pnas.1607493113>
- Cleveland, L. R., Hall, S. K., Sanders, E. P., & Collier, J. (1934). The wood-feeding roach *Cryptocercus*, its protozoa, and the symbiosis between protozoa and roach. *Memoirs of the American Academy of Arts and Sciences*, 17, 185–342. <https://doi.org/10.2307/25058198>
- Condamine, F. L., Nel, A., Grandcolas, P., & Legendre, F. (2020). Fossil and phylogenetic analyses reveal recurrent periods of diversification and extinction in dictyopteran insects. *Cladistics*, 36, 394–412. <https://doi.org/10.1111/cla.12412>
- Constantino, R. (2016). *Termite Database*. <http://termitologia.net>. Accessed 10 June 2020.
- Davis, R. B., Baldauf, S. L., & Mayhew, P. J. (2009). Eusociality and the success of the termites: Insights from a supertree of dictyopteran families. *Journal of Evolutionary Biology*, 22, 1750–1761. <https://doi.org/10.1111/j.1420-9101.2009.01789.x>
- Edgar, R. C. (2004). MUSCLE: Multiple sequence alignment with high accuracy and high throughput. *Nucleic Acids Research*, 32, 1792–1797. <https://doi.org/10.1093/nar/gkh340>
- Edwards, E. J., Osborne, C. P., Stromberg, C. A E., Smith, S. A., Bond, W. J., Christin, P. A., Cousins, A. B., Duvall, M. R., Fox, D. L., Freckleton, R. P., Ghannoum, O., Hartwell, J., Huang, Y., Janis, C. M., Keeley, J. E., Kellogg, E. A., Knapp, A. K., Leakey, A. D b, Nelson, D. M., ... C4 Grasses Consortium (2010). The origins of C4 grasslands: Integrating evolutionary and ecosystem science. *Science*, 328, 587–591. <https://doi.org/10.1126/science.1177216>
- Eggleton, P., Bignell, D. E., Sands, W. A., Mawdsley, N. A., Lawton, J. H., Wood, T. G., & Bignell, N. C. (1996). The diversity, abundance and biomass of termites under differing levels of disturbance in the Mbalmayo Forest Reserve, southern Cameroon. *Philosophical Transactions of the Royal Society B*, 351, 51–68. <https://doi.org/10.1098/rstb.1996.0004>
- Engel, M. S. (2019). Termite evolution: A primal knock on wood or a hearty mouthful of dirt. *Current Biology*, 29, R1126–R1129. <https://doi.org/10.1016/j.cub.2019.09.016>
- Engel, M. S., Grimaldi, D. A., & Krishna, K. (2009). Termites (Isoptera): Their phylogeny, classification, and rise to ecological dominance. *American Museum Novitates*, 3650, 1–27. <https://doi.org/10.1206/651.1>
- Evangelista, D. A., Wipfler, B., Béthoux, O., Donath, A., Fujita, M., Kohli, M. K., Legendre, F., Liu, S., Machida, R., Misof, B., Peters, R. S., Podsiadlowski, L., Rust, J., Schuette, K., Tollenaar, W., Ware, J. L., Wappler, T., Zhou, X., Meusemann, K., & Simon, S. (2019). An integrative phylogenomic approach illuminates the evolutionary history of cockroaches and termites (Blattodea). *Proceedings of the Royal Society B*, 286, 20182076. <https://doi.org/10.1098/rspb.2018.2076>
- Evans, T. A., Dawes, T. Z., Ward, P. R., & Lo, N. (2011). Ants and termites increase crop yield in a dry climate. *Nature Communications*, 2, 1–7. <https://doi.org/10.1038/ncomms1257>
- Freckleton, R. P., Phillimore, A. B., & Pagel, M. (2008). Relating traits to diversification: A simple test. *The American Naturalist*, 172, 102–115. <https://doi.org/10.1086/588076>
- Heath, T. A., Huelsenbeck, J. P., & Stadler, T. (2014). The fossilized birth–death process for coherent calibration of divergence-time estimates. *Proceedings of the National Academy of Sciences*, 111, E2957–E2966. <https://doi.org/10.1073/pnas.1319091111>

- Heled, J., & Bouckaert, R. R. (2013). Looking for trees in the forest: Summary tree from posterior samples. *BMC Evolutionary Biology*, 13, 221. <https://doi.org/10.1186/1471-2148-13-221>
- Higashi, M., & Abe, T. (1997). Global diversification of termites driven by the evolution of symbiosis and sociality. In T. Abe, S. A. Levin, & M. Higashi (Eds.), *Biodiversity* (pp. 83–112). Springer.
- Inward, D., Vogler, A. P., & Eggleton, P. A. (2007). A comprehensive phylogenetic analysis of termites (Isoptera) illuminates key aspects of their evolutionary biology. *Molecular Phylogenetics and Evolution*, 44, 953–967. <https://doi.org/10.1016/j.ympev.2007.05.014>
- Jetz, W., Thomas, G. H., Joy, J. B., Hartmann, K., & Mooers, A. O. (2012). The global diversity of birds in space and time. *Nature*, 491, 444–448. <https://doi.org/10.1038/nature11631>
- Jouquet, P., Dauber, J., Lagerlo, J., Lavelle, P., & Lepage, M. (2006). Soil invertebrates as ecosystem engineers: Intended and accidental effects on soil and feedback loops. *Applied Soil Ecology*, 32, 153–164. <https://doi.org/10.1016/j.apsoil.2005.07.004>
- Jouquet, P., Traoré, S., Choosai, C., Hartmann, C., & Bignell, D. (2011). Influence of termites on ecosystem functioning. Ecosystem services provided by termites. *European Journal of Soil Biology*, 47, 215–222. <https://doi.org/10.1016/j.ejsobi.2011.05.005>
- Korb, J., & Hartfelder, K. (2008). Life history and development – a framework for understanding developmental plasticity in lower termites. *Biological Reviews*, 83, 295–313. <https://doi.org/10.1111/j.1469-185x.2008.00044.x>
- Krishna, K., Grimaldi, D. A., Krishna, V., & Engel, M. S. (2013). Treatise on the Isoptera of the World: Introduction. *Bulletin of the American Museum of Natural History*, 377, 1–200. <https://doi.org/10.1206/377.1>
- Lanfear, R., Frandsen, P. B., Wright, A. M., Senfeld, T., & Calcott, B. (2016). PartitionFinder 2: New methods for selecting partitioned models of evolution for molecular and morphological phylogenetic analyses. *Molecular Biology and Evolution*, 34, 772–773. <https://doi.org/10.1093/molbev/msw260>
- Legendre, F., & Condamine, F. L. (2018). When Darwin's special difficulty promotes diversification in insects. *Systematic Biology*, 67, 873–887. <https://doi.org/10.1093/sysbio/syy014>
- Legendre, F., & Grandcolas, P. (2018). The evolution of sociality in termites from cockroaches: A taxonomic and phylogenetic perspective. *Journal of Experimental Zoology Part B: Molecular and Developmental Evolution*, 330, 279–287. <https://doi.org/10.1002/jez.b.22812>
- Legendre, F., Nel, A., Svenson, G. J., Robillard, T., Pellens, R., & Grandcolas, P. (2015). Phylogeny of Dictyoptera: Dating the origin of cockroaches, praying mantises and termites with molecular data and controlled fossil evidence. *PLoS ONE*, 10, e0130127. <https://doi.org/10.1371/journal.pone.0130127>
- Maestri, R., Monteiro, L. R., Fornel, R., Upham, N. S., Patterson, B. D., & de Freitas, T. R. O. (2017). The ecology of a continental evolutionary radiation: Is the radiation of sigmodontine rodents adaptive? *Evolution*, 71, 610–632. <https://doi.org/10.1111/evo.13155>
- Nalepa, C. A. (2015). Origin of termite eusociality: Trophallaxis integrates the social, nutritional, and microbial environments. *Ecological Entomology*, 40, 323–335. <https://doi.org/10.1111/een.12197>
- Nobre, T., & Aanen, D. K. (2012). Fungiculture or termite husbandry? The ruminant hypothesis. *Insects*, 3, 307–323. <https://doi.org/10.3390/insects3010307>
- Pie, M. R., & Tschá, M. K. (2009). The macroevolutionary dynamics of ant diversification. *Evolution*, 63, 3023–3030. <https://doi.org/10.1111/j.1558-5646.2009.00768.x>
- R Core Team (2020). *R: A language and environment for statistical computing*. R Foundation for Statistical Computing. <https://www.R-project.org/>
- Rabosky, D. L., Chang, J., Title, P. O., Cowman, P. F., Sallan, L., Friedman, M., Kaschner, K., Garilao, C., Near, T. J., Coll, M., & Alfaro, M. E. (2018). An inverse latitudinal gradient in speciation rate for marine fishes. *Nature*, 559, 392–395. <https://doi.org/10.1038/s41586-018-0273-1>
- Rambaut, A., & Drummond, A. J. (2020). *TreeAnnotator v2.6.3. Available as part of the BEAST2 package at*. <https://www.beast2.org/>
- Revell, L. J. (2012). phytools: An R package for phylogenetic comparative biology (and other things). *Methods in Ecology and Evolution*, 3, 217–223. <https://doi.org/10.1111/j.2041-210X.2011.00169.x>
- Sanderson, M. J. (1997). A nonparametric approach to estimating divergence times in the absence of rate constancy. *Molecular Biology and Evolution*, 14, 1218–1231. <https://doi.org/10.1093/oxfordjournals.molbev.a025731>
- Shellman-Reeve, J. S. (1997). The spectrum of eusociality in termites. In J. C. Choe, B. C. Crespi, & S. Fraser (Eds.), *The evolution of social behaviour in insects and arachnids* (pp. 52–93). Cambridge University Press.
- Siqueira, A. C., Morais, R. A., Bellwood, D. R., & Cowman, P. F. (2020). Trophic innovations fuel reef fish diversification. *Nature Communications*, 11, 1–11. <https://doi.org/10.1038/s41467-020-16498-w>
- Takematsu, Y., & Vongkaluang, C. (2012). A taxonomic review of the Rhinotermitidae (Isoptera) of Thailand. *Journal of Natural History*, 46, 1079–1109. <https://doi.org/10.1080/00222933.2011.651653>
- Thomas, G. H., Hartmann, K., Jetz, W., Joy, J. B., Mimoto, A., & Mooers, A. O. (2013). PASTIS: An R package to facilitate phylogenetic assembly with soft taxonomic inferences. *Methods in Ecology and Evolution*, 4, 1011–1017. <https://doi.org/10.1111/2041-210X.12117>
- Tonini, J. F. R., Beard, K. H., Ferreira, R. B., Jetz, W., & Pyron, R. A. (2016). Fully-sampled phylogenies of squamates reveal evolutionary patterns in threat status. *Biological Conservation*, 204, 23–31. <https://doi.org/10.1016/j.biocon.2016.03.039>
- Tuma, J., Eggleton, P., & Fayle, T. M. (2020). Ant-termite interactions: An important but under-explored ecological linkage. *Biological Reviews*, 95, 555–572. <https://doi.org/10.1111/brv.12577>
- Ward, P. S. (2014). The phylogeny and evolution of ants. *Annual Review of Ecology, Evolution, and Systematics*, 45, 23–43. <https://doi.org/10.1146/annurev-ecolsys-120213-091824>
- Ware, J. L., Grimaldi, D. A., & Engel, M. S. (2010). The effects of fossil placement and calibration on divergence times and rates: An example from the termites (Insecta: Isoptera). *Arthropod Structure & Development*, 39, 204–219. <https://doi.org/10.1016/j.asd.2009.11.003>
- Wilson, E. O. (1992). The effects of complex social life on evolution and biodiversity. *Oikos*, 63, 13–18. <https://doi.org/10.2307/3545511>
- Wu, L. W., Bourguignon, T., Šobotník, J., Wen, P., Liang, W. R., & Li, H. F. (2018). Phylogenetic position of the enigmatic termite family Stylotermitidae (Insecta: Blattodea). *Invertebrate Systematics*, 32, 1111–1117. <https://doi.org/10.1071/IS17093>

Zhao, Z., Eggleton, P., Yin, X., Gao, T., Shih, C., & Ren, D. (2019). The oldest known mastotermitids (Blattodea: Termitoidae) and phylogeny of basal termites. *Systematic Entomology*, 44, 612–623. <https://doi.org/10.1111/syen.12344>

SUPPORTING INFORMATION

Additional supporting information may be found online in the Supporting Information section.

How to cite this article: Pie, M. R., Carrijo, T. F., & Caron, F. S. The diversification of termites: Inferences from a complete species-level phylogeny. *Zoologica Scripta*. 2021;00:1–11. <https://doi.org/10.1111/zsc.12502>